

St. John's
Memorial Garden/Columbarium
Project

Christian burial within the church in earlier times

- “ From earliest times, people have been concerned about their final earthly resting place, especially that it be near the gathering place of their families so that each may be held in lasting, loving remembrance.
- “ In early Christian times, preferred burial space was within the church itself where the faithful gathered for a memorial service.

Eventually, burial within the church was not possible

- “ When space within the church was no longer available, the churchyard cemetery developed.
- “ Historically, the dual tradition of burial and of cremation was preserved.
- “ Only in recent times have burial grounds, far removed from the centers of life and prayer, been used.
- “ Columbariums are gaining in popularity. They may be considered to be a newer, more compact and cost effective version of the church cemetery

Cremation Grows in Popularity versus full body burial

- “ Cremation was still kept in the closet 20 years ago but is now going mainstream
- “ Religious restrictions that once existed have been loosened
- “ Once forbidden by the Catholic Church, cremation is now allowed
- “ In Wisconsin, cremation is now chosen in 48% of deaths

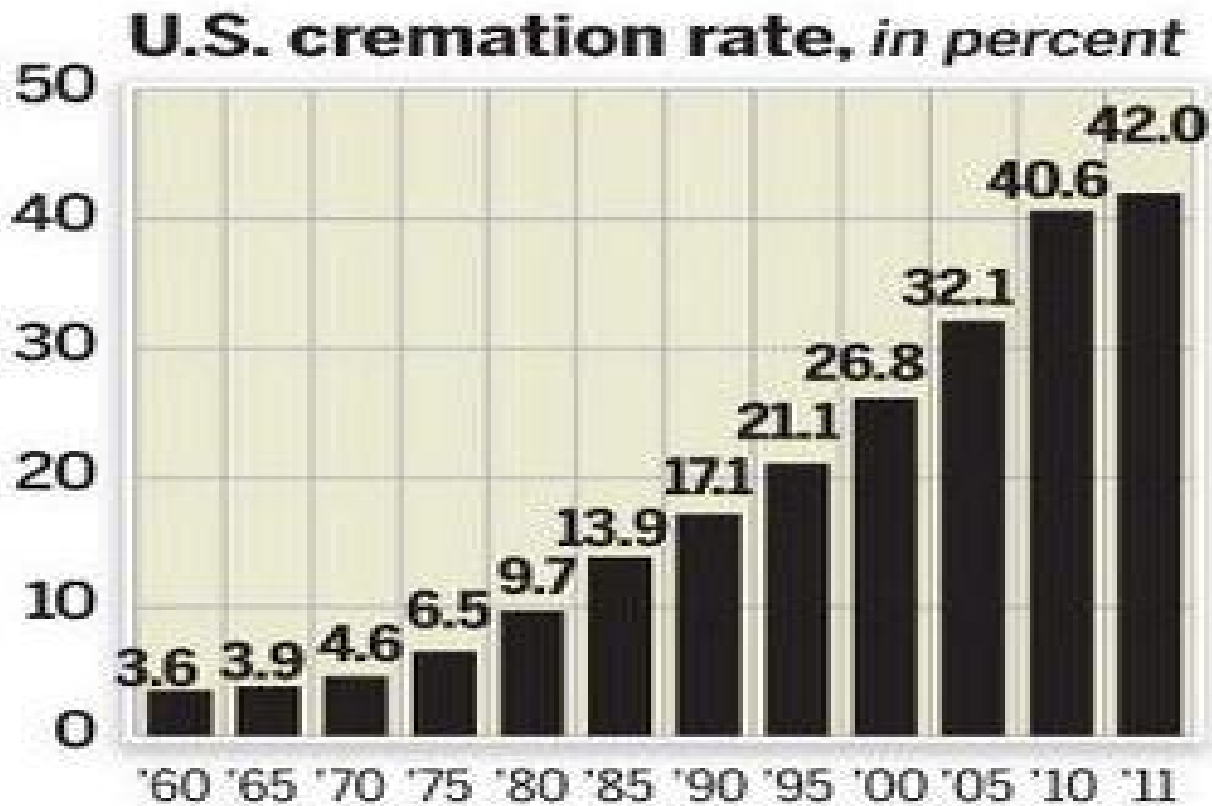
Lutheran Church's Position on Cremation

- “ Lutheran theology and tradition do not favor any particular form of burial
- “ Lutheran cremations are acceptable and increasing in number

“Ashes to ashes, dust to dust.”

Cremation Rates in the U.S.

Cremation is predicted to be the choice for 50% of all American funerals by 2016



Cremation – where do the ashes go?

- “ Cremation results in about 5-7 pounds of ashes, roughly the volume of a coffee can.
- “ Some wish that their ashes be stored in a location where family members and friends can come to fulfill a desire for physical closeness.
- “ Ashes can be buried in the ground or placed in a niche of a mausoleum or columbarium.

Cremation terms

- “ Columbarium – a group of small compartments or niches that comprise a permanent resting place for ashes from cremation
- “ Cremains – remains (ashes) of body after cremation
- “ Urn – container that holds the cremains
- “ Niche – space in wall of columbarium for urn (niche rhymes with “switch”)
- “ Inurnment – placing of container into niche

Columbarium details

- “ A columbarium contains niches behind a faceplate where the ashes are stored.
- “ Faceplates are engraved with the name of the deceased and dates of birth and death.
- “ Columbariums can be self standing, built against a wall or built into a wall. Most are incorporated into a memorial garden, a place for remembrance, meditation and prayer.

Why a Memorial Garden/ Columbarium for St. John's?

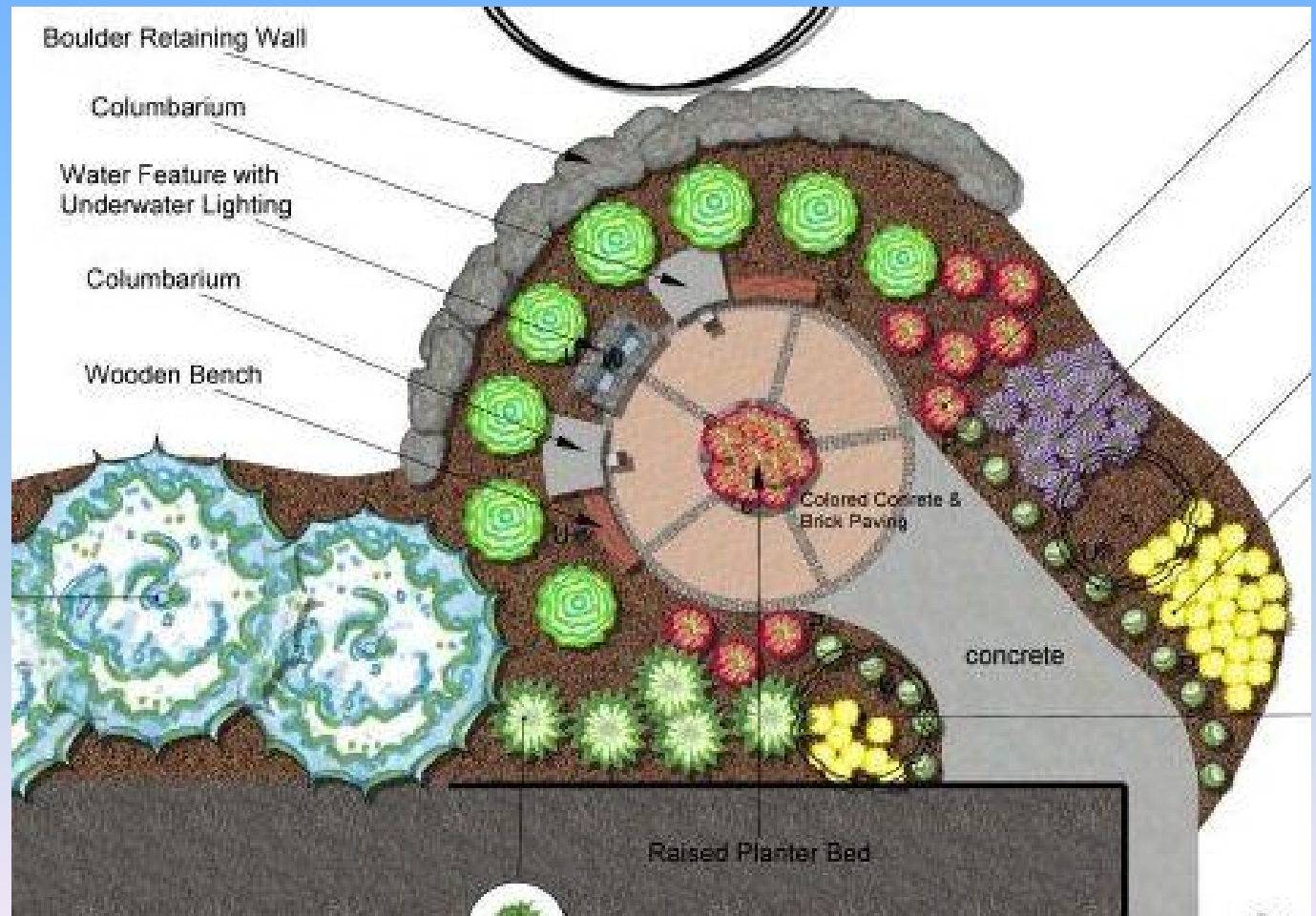
- “ It is a visible sign that the church cares for its members from birth and baptism through death and eternal life.
- “ Provides an additional ministry under “Caring and Serving”. Relieves much of the stress about what to do with the remains of the departed since niches can be reserved.
- “ Provides a safe and comfortable place for family and friends to pray and honor the dead.

Additional Aspects of a Memorial Garden/Columbarium

- “ The garden adds to the beauty of the church grounds and may be used for various services.
- “ A columbarium provides a theologically correct, ecologically sound and economical way to honor the deceased.
- “ The additional memorial plaques assure that those who have died but are interred elsewhere will never be forgotten.

Memorial Garden/Columbarium Located South of Church Building

- Low profile walls
- 72 niches initially
- Many plants/trees
- Benches for meditation
- Walkway off main parking lot



(Concrete center is 20qin diameter)

Top View

Memorial Garden is Circular, Sheltered from Three Sides by Plants

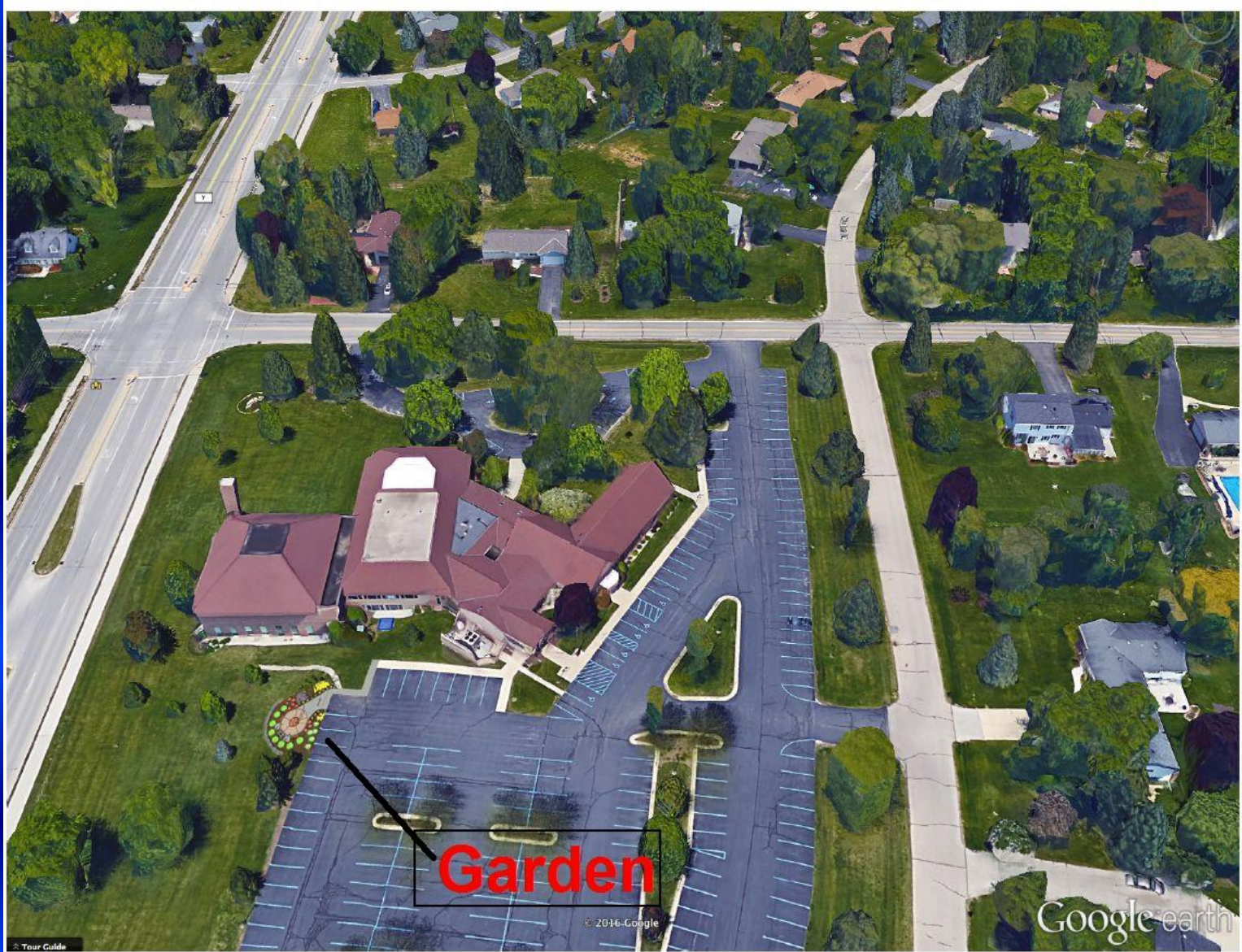


Memorial Garden Location as Seen from the West (Elmbrook Church)



Garden

Aerial View of Memorial Garden Location South of Church Building



Columbarium logistics

- “ Niches may be reserved in advance by signing a contract which assures perpetual care.
- “ Payment and a signed contract are required for purchase of a niche.
- “ Payment covers initial costs and future maintenance.
- “ Legal title to all niches shall remain with the church.

Memorial Garden/Columbarium Finances – Will Be Self Supporting

- “ Income from initial sales of niches will be used to pay for construction.
- “ Future income will be used for maintenance and future expansion.
- “ All income will be kept in a separate designated account and expenditures will be covered from that account. Account will be audited.

How will the Memorial Garden/Columbarium be financed?

- “ Funding for the Memorial Garden is provided through the sale of columbarium niches and memorial plaques, donor contributions and memorial gifts.
- “ Construction will not begin until enough niches/plaques have been sold or contributions received to cover the initial cost.

Price of columbarium niches

- “ \$2,000 for a single niche (containing one urn)
(\$1,800 preconstruction price)
- “ \$3,000 for a double niche (containing two urns).
(\$2,700 preconstruction price)

How is the Memorial Garden/Columbarium Administered?

- “ Memorial garden board of directors will be appointed by the church council and will be responsible for:
 - . Contracts, Financials, Administration
- “ Eligibility for a niche/memorial plaque: church members and their immediate families, previous members and their families and people with special relationships with the congregation.

Memorial Garden/Columbarium Committee Members

- ” Mark and Karen Aamot
- ” John and Mary Almasi
- ” Darlene Bahr
- ” Dick and Karen Granholm
- ” Carlene McMonagle
- ” Ralph and Marlene Zick
- ” Bill and Marion Schreiber
- ” John Rickinger