

## Joy to the World

**December 19 12:00 p.m. and 6:30 p.m.**  
Monday Blue Christmas worship

**December 23 6:00 p.m.**  
Friday Journey to Bethlehem outdoor worship

**December 24 10:00 a.m., 2:00 p.m., 4:00 p.m.**  
Saturday Candlelight and communion worship

**December 25 9:00 a.m.**  
Sunday Christmas Day worship

**January 1 9:00 a.m.**  
Sunday New Year's Day worship

*Worship with St. John's this Christmas*



### ***In This Issue***

Children, Youth and Family .....4-5  
Terry Hoepfner Retiring .....10  
Ministry Opportunities .....14  
Outreach Opportunities.....6-8  
Worship and Music.....3



**St. John's Lutheran**  
20275 Davidson Road  
Brookfield, WI 53045  
262-786-6887

### ***Follow Us***

Website: [www.makedisciples.com](http://www.makedisciples.com)  
Facebook: [@MakeDisciplesSJL](https://www.facebook.com/MakeDisciplesSJL)  
Instagram: [stjohnsbrookfield](https://www.instagram.com/stjohnsbrookfield)

# Pastor Ponders

by Pastor Brian Halverson

When I was in confirmation, I sometimes found myself all alone in the church, waiting for my dad or mom to pick me up. Sometimes it took awhile before they arrived which gave me plenty of time to spend inside the darkness of the church. These times, sitting and waiting in the dark, were perhaps the most formative times in my faith. At first I was very uncomfortable being alone in the dark, but eventually I began to feel at home there. It was so peaceful and quiet, like the darkness became a security blanket surrounding me.

December contains within it the winter solstice, the longest night of the year. Many associate darkness with fear, partly because we cannot see in the dark, and what we cannot see, we fear. We often term evil as the “darkness of the soul” and it is in the darkness that evil does its work. Take for example a passage from Romans: “For salvation is nearer to us now than when we became believers; the night is far gone, the day is near. Let us then lay aside the works of darkness and put on the armor of light” (Romans 13:11-12)

Our theme for Advent this year is: “Drawing to the Light”. I like this phrase, for it implies that we are not running away from the darkness out of fear, but we are moving toward it in faith. If God is Lord of all, then the Lord is lord of the darkness as well. Who has not been moved to wonder and awe when looking at the stars at night? Or the moon in all of its phases? Who has not been inspired by the beauty of a sunset or comforted by the crickets chirping in the evening or owls hooting in the dark?

We are drawn to the light but we are grateful for the darkness in which we find rest. Yet light and darkness are the same to God, as the psalmist sings: “if I say, ‘Surely the darkness shall cover me, and the light around me become night,’ even the darkness is not dark to you; the night is as bright as the day, for darkness is as light to you.” (Ps 139: 11 -12)

The theme of light and darkness in our Advent season is an important one, as we await the coming of the Lord who is the Lord both of light and dark.

*Pastor Brian*



# What's New?

## Advent Daily Devotions

We have daily devotional videos using the “Fling Wide the Door” devotions from Luther Seminary.

If you are not receiving the daily emails, but wish to get them, you may subscribe to the Weekly Happenings on our [website](#). The short devotional videos also will be available on our YouTube channel and on our website under Resources - Advent Devotions.

## Journey to Bethlehem

Beginning December 4, walk along the Stations of the Nativity in the St. John's parking lot for an interactive Journey to Bethlehem - from the birth of Jesus foretold to Jesus in the manger.

Pastor Brian leads the journey on Christmas Eve Eve at 6:00 p.m.

(Pro tip: If you take the journey on your own, be sure to bring an electronic device to scan the QR code or open the “travel guide” via the website for an interactive experience.)

# Moses Lecture

Our next St. John's Academy lecture is Sunday, December 4 at 5:00 p.m. Dr. Kristine Ruffatto will round out our discussion on Moses with an insightful lecture.

Lecture attendees are invited to share an Italian supper with our youth at 4:30 p.m.





# Worship and Music

## Christmas Eve Eve

December 23 | 6:00 p.m.

Join us as Pastor Brian leads us on a Journey to Bethlehem using the stations of the Nativity. We will begin in the Old Testament with the prediction of the Messiah and end with Jesus' birth.

When our journey is finished, we will gather in the Fellowship Hall for a time of hot chocolate, cookies, games and hot chocolate.



## Blue Christmas Worship

December 19  
Noon and 6:30 p.m.

Christmas is not a happy time for everyone. If you are dealing with a loss - a loss of a loved one, loss of a job, loss of health - join us for a meaningful time to gather in prayer and quiet with others.

## Holden Evening Prayer

Wednesday, December 7  
at Noon and 6:00 p.m.

Pastor Brent Halverson leads the noon services and Pastor Brian leads the 6:00 p.m. service.

Questions about  
music at  
St. John's?

Contact Becky!  
[bwhelpley@stjohnsbrookfield.org](mailto:bwhelpley@stjohnsbrookfield.org)



## Moses Musical Makes Memories

Thank you to all who participated in the November 20 musical "Moses and the Freedom Fanatics"! Singers, actors, speakers, dancers, costumes, props, oh my! It truly takes a village and we thank you!



## Christmas Concert

Jubilate Choral  
December 3  
7:30 p.m.  
at St. John's

Tickets available from Becky or on the Jubilate Choral [website](http://jubilatechorale.org) ([jubilatechorale.org](http://jubilatechorale.org)).

JUBILATE  
CHORALE

## Advent Music Notes

Please take time this Advent season and savor the rich language of our readings and hymns. The Advent texts are vivid and noisy, designed to wake us up from despair. "Keep awake", The voice "crying in the wilderness", the dry land shall be "glad", the desert shall "rejoice". Let us "prepare the way of the Lord" in our hearts and lives this season.

Peace be to you,  
Becky Whelpley



# Children, Youth & Families

Thank you, Preschool Families, for your generous support of our annual Food Drive. With each donation the bin filled with healthy food to share with others. What a wonderful experience for our youngest learners.

"So two good things happen as a result of your gifts—those in need are helped, and they overflow with thanks to God. Those you help will be glad not only because of your generous gifts to themselves and to others, but they will praise God for this proof that your deeds are as good as your doctrine." 2 Corinthians 9



## Questions About Preschool?

Contact Laura:  
262-786-4298 or  
[lricksinger@stjohnsbrookfield.org](mailto:lricksinger@stjohnsbrookfield.org)



St. John's Preschool

WHERE WE PLAY, DISCOVER, LEARN AND GROW.



## Christmas Party

Come join us for a fun night  
of food, games, and lots of laughter!  
December 18 at 4:30-6:00 p.m.

All ages - Sunday School through High School and their families!



# Children, Youth & Families

## Advent Bags and Books

**Sunday School Families** (through 5<sup>th</sup> grade)

Be sure to swing by St. John's to pick up your Advent Bags and Books! They are filled with this year's Family Advent Devotional "In Light and Darkness" and fun items to help make the season brighter! They are located in the Fellowship Hall.



## HS Youth Group Calendar

Date	Event	Time
12/4	9th Grade - Mormon Worship	9:00am
12/4	Youth Group	4:30-6:00pm
12/11	Sunday School Card Making	9:30-10:15am
12/16	Food Drive Shopping	6:30pm
12/18	Christmas Party	4:30-6:00pm
12/29	9th Grade Confirmation - Milw. Art Museum	10:30am

## Museum Tour

Ninth grade confirmands will be heading to the Milwaukee Art Museum on December 29 to learn about how religion was spread before the invention of the printing press via art, as well as how art is influential in other topics important to our kids.

## Boundary Waters

Mark your calendars!! High school youth will be headed to the Boundary Waters THIS summer!! July 8 – 15, 2023.

More information to come.

## Sunday School

Join us Sundays at 9:30 a.m. for Sunday School!



Join us for Sunday School in Advent for Journey to Bethlehem: Follow The Star! This is a fun look at the Christmas Story through the eyes of the animals who were there! New to Sunday School? Email Joanna for information. [jsalinas@stjohnsbrookfield.org](mailto:jsalinas@stjohnsbrookfield.org).

## Sunday Evening Education

We are excited to offer programming for our Middle Schoolers on Sunday evenings from 4:30-6:00pm.

### 7<sup>th</sup> & 8<sup>th</sup> grade Calendar

- Dec. 11 - Confirmation Class 4:30-6:00pm
- Dec. 18 - Advent Party 4:30-6:00pm
- Dec. 25- No class – Merry Christmas!

### 5<sup>th</sup> & 6<sup>th</sup> grade Calendar

- Dec. 4 - Connect Class 4:30-6:00pm
- Dec 18 - Advent Party 4:30-6:00pm

## Food Drivers Needed

We are looking for a few adults to drive/chaperone for our Food drive shopping event on December 16.

If you would be interested in driving for this event. Please sign up below (or online) so that Stephanie can make sure you have filled out all appropriate forms.

## Food Drive Shopping

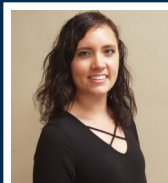
Calling all high schoolers to help shop at Woodman's for fresh fruit and frozen meat for the Christmas Food Drive that will be delivered the next morning. Please sign up here (or online) if you can shop:

## Shopping Sign Up

## Contact Joanna with Toddler to 8th Grade Questions

Joanna is available by email at [jsalinas@stjohnsbrookfield.org](mailto:jsalinas@stjohnsbrookfield.org) or by call or text at 262-278-8021.

Joanna sends out weekly Children, Youth and Family emails. If you are not receiving those emails and would like to, let Joanna know!



Contact Stephanie with questions about high school and young adult ministry at St. John's

[sbroussard@stjohnsbrookfield.org](mailto:sbroussard@stjohnsbrookfield.org)



# Outreach Opportunities

## Card Ministry

St. John's people have been collecting cards for over 23 years.

To date, this year we have collected 1999 new cards. A big "Thank You" to all who have supported this ministry.

We have decided to continue this project, but will only accept **NEW CARDS WITH THEIR ENVELOPES** for residents of nursing homes and Hope Center to send out. The cards may be placed in the lower right hand cupboard of the Women's Ministry cart in the Fellowship Hall.

Any questions, please contact  
Kathy Hoepfner at:  
262-786-0412 or  
[tkhoepfner2@gmail.com](mailto:tkhoepfner2@gmail.com).



## Wrapping Up the Holiday Bazaar

What a bittersweet, amazing day! The food, the crafts, and the fellowship were especially wonderful this year and we had an overwhelming turnout of over 350 through the door and that doesn't even count all those serving and helping that day! Thank you if you baked, crafted, greeted, hosted, cashiered, and/or shopped this year.

This year's disbursements were \$15,000. They go out to help those in need nearby and around the globe. It feels so humbling and heartwarming to have been a part of this. What a blessing!

### St. John's Holiday Bazaar 2022 Disbursements

Hope Center of Waukesha	3500	St. John's Middle School Freezer Meals	
El Salvador Student Scholarships	2000	Service Project	400
Food Pantry of Waukesha	1500	NAMI National Alliance on Mental Illness	200
Sister House of Waukesha	1000	Dementia Friendly Elmbrook	250
Women's Center of Waukesha	1000	St. John's Quilting Mission	250
Lutheran World Relief Newborn Kits	600	St. John's Youth Mission Trip	500
All People's Church Women's Retreat	600	St. John's Kids of the Kingdom Meals	400
Tanzania Akeri Parish Curriculum	500	St. John's Sunday Night Teen Meals	400
Oaks Indian Mission	500	St. John's Children's Bibles	300
Christmas Food Boxes Wauk/Milwaukee	500	St. John's Preschool	200
Community Project for Seniors	400	<b>TOTAL</b>	<b>15000</b>

## Christmas Food Bags

This year will be St. John's 38<sup>th</sup> annual food drive. We deliver food (fixin's for a holiday meal including a ham or turkey, plus general food staples) for less fortunate families.

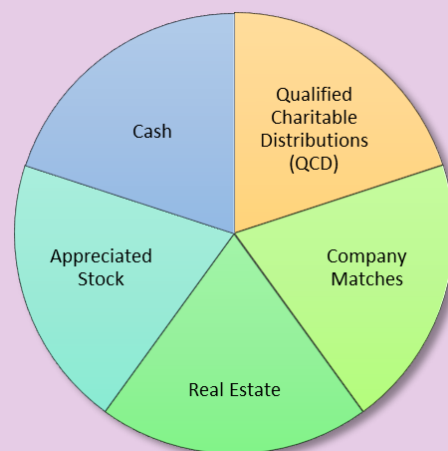
**How can you help?** Pick up and fill one (or more) of our requested "red", "green" or "white" grocery lists ... provide a ham or turkey ... deliver food ... there are plenty of opportunities to serve. (The lists also are available on our website: [www.makedisciples.com](http://www.makedisciples.com)).

Green and red (pink) complementary lists are for All Peoples, to honor the specific items they've requested. New this year: All Peoples is requesting home baked cookies of any kind. White lists are for the Waukesha Food Pantry.

Contact Brian Cranfill at 414-305-9822 with questions.

## 2022 Charitable Giving

Are you considering a charitable donation for 2022 to maximize tax benefits? Consider donating to St. John's. Gifts can be made in several ways:



This information is not legal or tax advice. Information is from sources deemed reliable. Contact your own legal or tax advisor before taking any action that would have a legal or tax consequence.

## 2022 Donation Deadline

Any donations you wish to claim in 2022 must be received in the office or postmarked by December 31, 2022. If a donation is received before December 31, 2022 that you wish to have recorded as a 2023 contribution, please clearly indicate your intentions.

## Good Samaritan Fund

St. John's "Good Samaritan Fund" is available to any member of our church in need, whether it be mortgage or rental assistance, food assistance, or any other essential. If you or another member can use this assistance, please contact the church office. Your request will be treated confidentially and be acted upon accordingly.

# Christmas Food Drive

Return all food to St. John's by 9:00 a.m., December 17

## Donation Delivery Information

- Bring all food donations for All Peoples and/or the Waukesha Food Pantry to St. John's by 9:00 a.m. on December 17.
- Double bag the donations in paper bags or use cloth bags. (A limited number of cloth bags are available for All Peoples donations as most clients will carry food home on foot and paper bags tear easily.)
- Staple the list to the bag.



## Transport drivers needed.

- Drivers are need for food transport to All Peoples and Waukesha Food Pantry.
- Email Brian Cranfill ([briancranfill1@gmail.com](mailto:briancranfill1@gmail.com)) if you can be a driver, specify which destination, or sign up in the lobby/narthex.

## WHITE Food List for Waukesha Food Pantry

- Canned fruits in juice (pineapple is popular)
- Whole grain cereal
- Shelf stable soy/almond milk
- Ready to eat soups with meat
- Canned pasta with meat
- Shelf stable proteins: tuna, chicken, ham, tofu
- Baby formula (especially Similac)
- 100% fruit juice

**TURKEY** (8-12 lbs.) or **HAMS** (3-8 lbs.) for families to build a Christmas meal around.



## GREEN Food List for All Peoples

- 2 15.25 oz. cans whole kernel corn
- 1 29 oz. or 2 14.5 oz. cans peaches
- 3 pound bag of red or white potatoes
- 12-16 oz. of turkey gravy
- 1 box yellow cake mix
- 1 box hot chocolate (6-8 packets)
- 1 16 oz. bottle canola oil
- 1 10-12 oz. Uncle Ben's or Rice-a-Roni
- 24-30 oz. sweet potatoes
- Christmas cookies

(This list complements the RED list.)

Deliver to St. John's by 9:00 a.m., December 17.

Place in cloth bag or double paper bag.

## RED Food List for All Peoples

- 1 12 oz. bag stuffing
- 3 boxes Jiffy Cornbread mix
- 2 14.5 oz. cans green beans
- 1 10.5 oz. can cream of mushroom soup
- 1 3-6 oz. can/packet fried onion rings
- 1 lb. elbow macaroni noodles
- 1 lb. Velveeta cheese
- 1 12 oz. can whole cranberry sauce
- 1 5-7 oz. hot sauce

(This list complements the GREEN list.)

Deliver to St. John's by 9:00 a.m., December 17.

Place in cloth bag or double paper bag.





Click here  
for the  
online tree



# Giving OPPORTUNITIES

## WILC

(Wisconsin Independent Learning College)  
Make the holidays brighter for students at WILC. Take a gift tag from the Giving Tree. Purchase the item on the tag. Return the ornament and unwrapped item under the tree by December 25.  
Learn more at <https://wisconsinilc.org>

## ACAP

(Adaptive Community Approach Program)  
Take a gift tag from the Giving Tree. Purchase the item on the tag. Return the ornament and unwrapped item under the tree by December 25.

## ANGELS BABY CLOSET

Take a gift tag from the Giving Tree. Purchase the item on the tag. Return the ornament and unwrapped item under the tree by December 25.

## ELCA GOOD GIFTS

Take an ornament. Go to [ELCA.org/GoodGifts](https://www.elca.org/goodgifts) to make a donation of the item on the ornament. Give the ornament to a loved one as their Christmas gift. Good Gifts Catalogs are available on the Information Desk with more information on other gift options.

## THE WOMEN'S CENTER

Take a gift tag from the Giving Tree as a reminder. Purchase a gift card (or several) from the tag. Return the gift tag to the tree. Place the gift card, labeled with the amount, in the lockbox outside the office door.  
Gift cards for The Women's Center, a domestic abuse shelter, may be given all year.

## CHRISTMAS FOOD BAGS

Take a red, green and/or white shopping list. Purchase the items on the lists. Double bag the items and staple the list to the bag. Return the filled bags to St. John's by 9:00 a.m. on December 17.  
Hams, turkeys, and drivers are also needed.

## ENDOWMENT FUND

The gift that keeps on giving. A tax-deductible gift to the endowment fund provides a lasting legacy to ensure the outreach work of our church continues. Interested? Contact the church office or the committee chairperson, Phil Lange.



# Troop 16

by Troop Historian, Jonathan McMahon

## Creep-O-Ree November 4 - 6

Two scouts and three adult leaders attended the annual Creep-O-Ree weekend campout held at Camp Long Lake near Dundee, WI between November 4 and 6. Every year Creep-O-Ree hosts a themed campsite decorating contest for all the troops in attendance, and this year's theme was 'Survivor'. This year's outing was also completely booked, with a total of 550 boy, girl, and scout leaders in attendance.



### Major highlights (and lowlights):

The major activity on Friday evening was campsite trick or treating.

Saturday daytime activities included a maze runner, rifle shooting, tomahawk throwing, making Paracord Bracelets, Rock Climbing, Outdoor Challenge, Pumpkin Bowling, & Tug of War under the large circus tent due to the storms and high winds. Saturday evening was a costume contest, a dance, and movies.

Strong winds, rainfall, and cold temperatures all weekend, it hampered the enjoyment of the outing for some.



Strong wind gusts on Saturday led to us having to securely

stake down our tents. By Sunday the Circus tent began to collapse due to the high winds.

## Joseph Balzer's Eagle Ceremony November 12

Joseph McGrath, who presented Joe with his Eagle pin, was his guest speaker.

Two scouts and Adult leaders performed the multiple tasks for the ceremony. Joe earned 35 merit badges and two palms.

His Eagle Service project was directing the scout troop to help with a blood drive at St. John's. Josh is Troop 16s 76th Eagle recipient.

## Regular Tuesday meetings

Halloween party was held at I-Combat Laser



company on Sunset with costumes and games. Mrs. Watson hosted the refreshments.

Other monthly activities included...

- Bowling at Sunset Bowl
- A compass direction game
- Monthly uniform inspection
- Each patrol designed a patrol flag, painted the design on it and attached it to the patrol flag pole.



## December Birthdays

1 Mari Osmon	9 Jason Turner	17 Ryan Gillette	HAPPY BIRTHDAY
1 Lori Paget	10 Janet Otten	17 Dale Landgren	
3 Isaac Roth	11 Michael Haas	17 Steve Pirlot	
4 Maelyn Olson	12 Barb Bessette	18 Jen Beug-Hoffman	
4 Owen Visuri	12 Robert Wagner	18 Anna Douglas	25 Mark Reinfeldt
5 Gary Bruck	12 Ava Zahn	19 Carole Lewis	25 Sandy Scherer
6 Jenny Augustine	13 Ronald Bertrand	20 Brooklyn Barz	26 Fred Fuller
7 Michael Petfalski	13 Sharlene Waller	20 Sandy Koscielniak	26 Emily Otten
7 Reini Wasemiller	13 Andrea Warp	20 Donald Spencer	27 Lily Fuller
8 Mariah Fuller	14 Jerry Mahoney	21 Holly Zahn	27 Duane Walsh
8 Ian Kraus	15 Payton Fuerstenberg	23 Charlie Piette	28 Jessica Gugel
8 Gail Krebs	15 Will Whitaker	23 Mark Surma	30 Peggy Keough
8 Kelly Petfalski	15 Jack Whitaker	25 Jane Babcock	30 Ryan Rateike
8 Jo Riley	16 Mark Paget	25 Carol May	31 Hailey Adams
			31 Hope Burns
			31 John Seamonson

# Terry Hoeppner Retiring From Scouting

We would like to share with you Terry Hoeppner's announcement that he will be retiring as Troop 16's longtime Scoutmaster as of December 31, 2022.

Mr. Hoeppner's scouting experience began with Troop 141 at Sherman Park Lutheran Church in 1949. He earned the distinction of Eagle Scout in 1956 and has remained active in Scouting for over 70 years. Significantly, he has been awarded the Silver Beaver, which is Scouting's highest adult honor. Additionally, he has received:

- ♦ The Lutheran Church's Lamb Service Award for participation in Boy Scouts of America programming,
- ♦ Various Scouter Training Awards, including the Potawatomi Area Council's Oak Leaf Cluster,
- ♦ The Pro Deo et Patria created in 1926 by The Lutheran Church to encourage Scouting members to grow stronger in their faith.

Overall, his accomplishments and dedication to Scouting have influenced hundreds of youths and adults, and the results are beyond comparison. To illustrate the profound impact he has had on decades of Scouts, here are a few of Mr. Hoeppner's Scouting facts:

- ♦ Has camped for more than 1,000 nights during over 400 campouts
- ♦ Currently acts as a Merit Badge Counselor for Cooking, Canoeing, Orienteering, and Sports
- ♦ Has provided leadership and guidance for generations of Scouts
- ♦ Has earned the required 21 Merit Badges for his Eagle Scout rank, along with an additional 5 badges to earn a Palm award.
- ♦ Has been the Scoutmaster for 61 Scouts who achieved their Eagle Scout rank

Mr. Hoeppner's Scouting career has been outstanding and his



accomplishments innumerable. We wish him well as he enjoys Tuesday nights at home with Kathy.

To celebrate his Scouting Achievements and Leadership, a gathering is being planned in the afternoon on Sunday, February 5, 2023 in St John's Fellowship Hall. More information will be provided later.

Thank You Terry for Your Unwavering Commitment to Service,

Troop 16's Committee

## Superb Sixtieth Celebration

*Jesus Christ is the same yesterday, and today, and forever. Hebrews 13:8*



We gathered together to celebrate sixty years of ministry at St. John's with a program of music and memories, fellowship over a delicious potluck, and time travel to a Reformation Village. Wonderful new memories were made.



# Council Communications

Fellow Disciples,

I pray this news finds you healthy and well. Here are highlights from the November 21 Council meeting.

## President Report

- Thank you to all those involved in making the wonderful November events possible!! From the record setting Bazaar to the amazing festivities surrounding our 60<sup>th</sup> Anniversary celebration, and the entertaining "Moses the Musical" performance...what an amazing November.
- One of our 2022 goals was to complete the final phase of the technology upgrade in the sanctuary. This included a new high-definition projector (installed in April), and speaker upgrades to improve the sound quality and clarity. I am happy to report the speaker upgrade is scheduled for December 1, just in time for the upcoming season of Advent.
- Mark your calendars, our Annual Meeting will be Sunday, February 5.

## Financial Report

- Budgeting discussions and preparation in underway for the 2023 budget.
- Budget listening session will take place mid-January. Stay tuned for dates and times.
- Due to the lower than anticipated giving, it was recommended we do not transfer any money into the Capital Improvement Fund (CIF) this month.

- The balance of the Capital Improvement Fund (CIF) as of November 8 was \$121,569.

Transition team

- Thank you to the Transition Team who continues to monitor and review ongoing COVID advancements.

Please reach out to me or the council members with any questions you may have.

Praying for peace and good health to all,  
Brian Zach, President

## St. John's Council

### President

Brian Zach 608-279-3577

### Vice-president

Keith Paukner 414-916-2618

### Secretary

Josh Werner 262-271-0639

### Treasurer

Carrie Peters 262-853-5888

### At Large

Jim Morgan 262-893-7385

Mark Latus 262-784-1183

Charlotte Yourell 414-405-6081

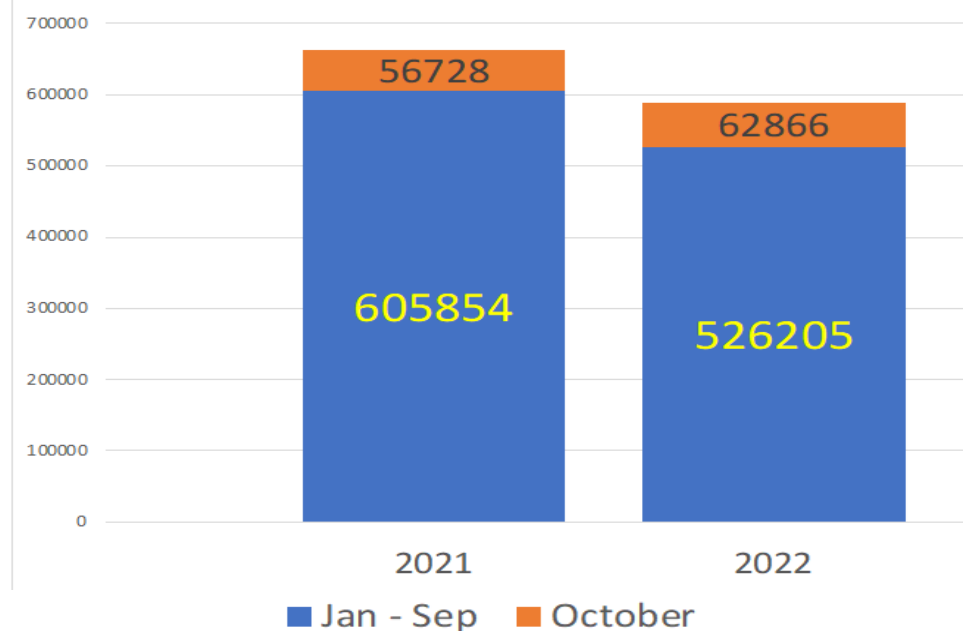
Brittany Larson 262-527-2404

Kris Wasserman 262-424-3383

## Treasurer Report

What an exciting fall we've had at St. John's! We included a chart in last month's inspire showing the monthly giving for 2022, along with 2021's monthly giving for comparison purposes. Those totals are consolidated in the blue sections on this month's Giving Summary chart. As you can see when comparing January – September, giving in 2022 was almost \$80,000 less than giving in 2021 for the same period. I'm excited to report that giving in October was almost 11% higher than giving in October 2021. Your prayers and generosity make a difference!

Giving Summary  
2021 vs 2022



## Contact Us

### Office Hours

The St. John's phone is answered and doors are monitored for entry 9:00-Noon, Monday to Friday.

### Church

phone/fax: 262-786-6887

email: to email a staff member, please click on the link by their photo on the website under Staff.

### Preschool

phone: 262-786-4298

rickinger@stjohnbrookfield.org

## About Us

### Welcome Statement

At St. John's we align with Paul's words in Romans 15:7 "Welcome one another, therefore, just as Christ has welcomed you, for the glory of God." We welcome one another all who are seeking God's love and grace. We welcome all because God welcomes all, regardless of race, age or culture, sexual orientation, gender identity, gender expression, or relationship status. We welcome all without regard to physical or mental health, socio-economic circumstances, or anything that too often divides us. Our unity is in our commitment to the ways, grace and love of Christ.

### Core Values of St. John's:

- Serving our world, locally and globally;
- Inspiring worship and music that honor God;
- Nurturing relationships with one another as Jesus walks with us;
- Growing in God's grace through education and discipleship;
- Engaging children and youth in the life of the church.

## Praying for ...

We pray for those who are battling illness, are healing, or are needing extra prayers:

Barb K	Dorothy E
Floyd K	Cindy H
John G	Steve W
Kathy K	Jerry M
Connie P	Arlyn M
Cheryl H	Dylan H
Linda N	

To help us to stay connected, we will be sharing the list with you monthly. Prayers may be for thanksgiving, hope and/or healing. The requests may be immediate, short or long term.

Prayer requests may be submitted at the bottom of the website [www.makedisciples.com](http://www.makedisciples.com).



*Without ceasing  
I remember you  
always in my  
prayers.*

Romans 1:9

## Creation Corner

### Use Recyclable Wrapping Paper!

Americans throw away 25% more trash during the Thanksgiving to New Year's holiday period than any other time of year. The extra waste amounts to 25 million tons of garbage, or about 1 million extra tons per week!

Reduce your impact by considering how you wrap your gifts. A general rule of thumb is that regular wrapping paper (including the glossy stuff) is often recyclable as long as it doesn't have non-paper additives. Metallic embellishments, glitter, and plastic-coated items will land your paper in the landfill. Bows, string, tissue paper and ribbon should also not be recycled. Consider using reusable bags and saving bows, ribbon, boxes, and other wrapping items for reuse.

## Staff Phone Extensions

St. John's Phone Number: 262-786-6887

Extensions:

100	Sue Smith, Admin Assistant
101	Brian Halverson, Senior Pastor
102	Pam Klink, Communications Coordinator
103	Bill Stace, Building Supervisor
104	Joanna Salinas, Children's Ministry
105	Stephanie Broussard, Youth Ministry
106	Rebecca Mitchell, Bookkeeper
107	Becky Whelpley, Music Director
200	Laura Rickinger, Preschool

**Note the  
changes!**



# Calendar of events for December 2022

Sunday	Monday	Tuesday	Wednesday	Thursday	Friday	Saturday
*worship service/event is live streamed		To request space for your small group or ministry to meet in the building, please complete the Facility Use Form on the St. John's website. It is under the Resources tab - <a href="#">Documents and Forms</a> . Contact <a href="#">Sue Smith</a> , Administrative Assistant with questions.		1 6:30p AI-Anon	2 6:15a virtual men's group 7:30p Chinese Bible Study	3 7:30p Jubilate Chorale
4 Advent week 2 8:30a worship* 9:30a education/fellowship 10:30a worship 4:30p 5/6 Connect Class 4:30p youth group 5:00p St. John's Academy	5 Food Pantry Pick Up 10:00a yoga 11:30a Hope Center meal 6:00p AI-Anon 6:30p Adult Ministry Mtg via ZOOM	6 8:30a property team 9:00a woman's Bible study 10:00a staff mtg 6:00p quilters 6:30p handbell rehearsal 7:00p Boy Scouts	7 8:30a Retired Men's bfast 12:00p Holden Prayer 4:30p Finance Team 6:00p AA 6:00p TOPS 6:00p Holden Prayer 6:30p choir rehearsal	8 4:00p Finance Team Mtg 6:30p AI-Anon	9 6:15a virtual men's group 9:00a Book Club 10:00a prayer shawl group 7:30p Chinese Bible Study	10
11 Advent week 3 8:30a worship* 9:30a education/fellowship 10:30a worship 4:30p 7/8 Confirmation	12 10:00a yoga 11:30a Hope Center meal 6:00p AI-Anon	13 8:30a property team 10:00a staff mtg 6:30p handbell rehearsal 7:00p Boy Scouts	14 9:30a Morning Circle 10:00a Purple Lily Cafe 6:00p AA 6:00p TOPS 6:30p choir rehearsal	15 6:30p AI-Anon 6:00p Preschool Program	16 6:15a virtual men's group 6:30p Food Drive Shopping 7:30p Chinese Bible Study	17 10:00a Food bag delivery
18 Advent week 4 8:30a worship* 9:30a education/fellowship 10:30a worship 4:30p Advent Party	19 10:00a yoga 11:30a Hope Center meal 1:00p Women's Bible Study 6:00p AI-Anon 6:30p council mtg 6:30p Blue Christmas worship	20 8:30a property team 9:00a Women's Bible Study 10:00a staff mtg 1:00p Book Club 7:00p Boy Scouts	21 12:00p Retired Men's lunch 6:00p AA 6:00p TOPS 6:30p choir rehearsal	22 6:30p AI-Anon	23 6:15a virtual men's group 6:00p outdoor Journey to Bethlehem worship 7:30p Chinese Bible Study	24 Christmas Eve 10:00a worship* 2:00p worship* 4:00p worship
25 Christmas Day 9:00a worship* Merry Christmas! No youth programming	26 10:00a yoga 11:30a Hope Center meal 6:00p AI-Anon	27 8:30a property team 10:00a staff mtg 7:00p Boy Scouts	28 6:00p AA 6:00p TOPS	29 10:30a 9th grade to MAM 6:30p AI-Anon	30 6:15a virtual men's group 7:30p Chinese Bible Study	31

# New Ministry Opportunity might be calling YOU!

## Audio/Visual Team

Can you push a button? Can you move a joystick? Then you can join the St. John's A/V Team!

Worship at St. John's is an amazing opportunity to praise our Savior. The A/V Team enhances in-person worship at both services and streams the 8:30 service for those unable to worship in-person. Join the team to make disciples by helping others follow Jesus.

Current team members love what they do and are very supportive of each other. There is room for only one or two more team members. Serve as often as you wish.

Training is provided. Contact [Pam](#) with questions.

## Welcome Team

Would you be willing to be a greeter before one of our worship services? Now that we are getting back to a more "normal" state of things after the height of the pandemic, we would love to reinstate our effort to welcome everyone on Sunday morning, particularly those who are visiting with us for the first time.

Please see Pastor Brian or Keith Paukner if you are interested in being a part of our mission of invitation at St. John's.

*welcome*

## All Peoples Partnership Coordinator

We are celebrating 31 years of partnership with our sibling church in Milwaukee! Over those years, we have built many ministry programs and close relationships together. As we honor some of our long-term coordinators and volunteers, we also look forward to new ways in which we might connect and new ways for St. John's members to learn and lead.

The Partner and Outreach Committee is looking for an individual or team to serve as the SJLC primary relationship coordinator(s) with our partner, All Peoples Gathering Lutheran Church. **As the relationship coordinator(s), your role will be to serve as the communications liaison with All Peoples, to encourage growth in our relationship as partner churches by sharing prayer concerns and joint ministry opportunities, and to work with leaders and volunteers at St. John's to promote and coordinate annual ministry projects.** As coordinator, you will receive updates via email directly from All Peoples, you have the opportunity to join the All Peoples Members and Friends Facebook group, and are invited to attend two or three All Peoples Partner coordination/prayer events per year. You will have the opportunity to work with All Peoples to coordinate St. John's support for a few large annual ministries: Beloved Sisters Retreat; Backpack & School Supply Project; Thanksgiving Food Baskets (specifically apple

pie baking); Winter Wear for Kids; and Christmas Food Boxes. The relationship coordinator will also oversee the sharing of financial gifts from St. John's with All Peoples and serve as a member of the Partnership and Outreach Committee. Members of the committee are:

Brian Cranfill – Outreach Ministries Coordinator  
Mary Beth Gubbins – Los Heroes Relationship Coordinator

Deborah and Andy Petersen – Akeri Parish Relationship Coordinator

Cindy Halverson – Committee Chair  
Pam Klink – Communications

There is always lots of help and support for our partnership with All Peoples. The coordinator is important to lead in these efforts and communicate with our partner. If you are interested or want to know more, contact Cindy Halverson, [chalvers57@gmail.com](mailto:chalvers57@gmail.com) or 414.544.2008.



A special thanks to Mary Mueller who has served in this role for many years. Mary, with support from her husband, Steve, have carried our love and support to and with our sister church with care and faithfulness. **THANK YOU, Mary!!**